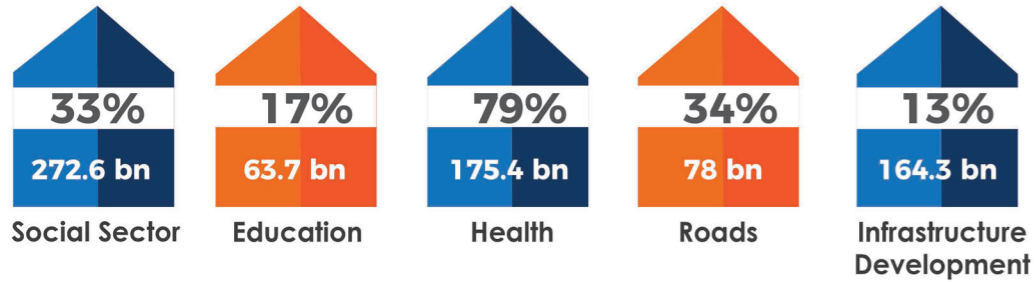


MAJOR INCREASES IN SECTORAL ALLOCATIONS FY 2022-23



HEALTH



Rs. 3.1 Billion
Revamping of DHQ & THQ Hospitals

Rs. 1.6 Billion
Integrated Reproductive Maternal New Born & Child Health

Rs. 127 Billion
Universal Health Insurance Program

Rs. 1 Billion
Establishment of Nursing University at PKLI

EDUCATION



Rs. 4.8 Billion
Afternoon Schools Program

Rs. 1.5 Billion
Punjab Non-Formal Education

Rs. 1 Billion
Retrofitting of Partially Dangerous School Buildings

Rs. 0.5 Billion
Construction of Shelter-less Schools in Punjab

Rs. 5.5 Billion
Missing Facilities & Constructions of Addl. Classrooms

Rs. 0.4 Billion
Establishment of 04 Special Education Centers

Rs. 2.1 Billion
Establishment of Universities in 05 major Cities

Rs. 1.5 Billion
Provision of Laptops

SECTOR WISE ADP ALLOCATION IN FY 2022-23

| Sector | Sub-Sector | Allocation (IN RS BILLION) |
|--------------------------------|--|----------------------------|
| SOCIAL SECTORS | Education | 56.7 |
| | Health & Population Welfare | 174.9 |
| | Water Supply & Sanitation | 11.9 |
| | Social Welfare | 1.6 |
| | Women Development | 0.9 |
| | LG&CD | 19.05 |
| | Sports & Youth Affairs | 7.5 |
| PRODUCTION SECTORS | Agriculture, Livestock & Food | 19.5 |
| | Forestry, Wildlife & Fisheries | 6.5 |
| | Industries, Commerce, Investment & Skills Development | 12.5 |
| | Mines & Minerals | 1.5 |
| | Tourism | 1.2 |
| | | |
| OTHERS | Environment & Climate Change | 5 |
| | Information, Culture & Archeology | 1.2 |
| | Auqaf & Religious Affairs | 0.6 |
| | Human Rights & Minority Affairs Planning & Development | 2.5 |
| | | 28 |
| INFRASTRUCTURE DEVELOPMENT | Roads | 80.7 |
| | Irrigation | 27.6 |
| | Energy | 5 |
| | Public Buildings | 29.5 |
| | Urban Development | 21.3 |
| SERVICES | Governance & IT | 6.2 |
| | Labour & HR | 0.5 |
| | Transport | 6.3 |
| | Emergency Services (1122) | 1.8 |
| SPECIAL PROGRAMS & INITIATIVES | Special Programs & Public Partnership | 154.5 |



DEVELOPMENT PORTFOLIO 2022-23

Planning & Development Board
Government of the Punjab

IMPROVING LIVES BY PROMOTING
INCLUSIVE AND SUSTAINABLE
DEVELOPMENT

روشن راہیں نیا سویرا



SALIENT FEATURES OF DEVELOPMENT PORTFOLIO 2022-23



Guiding Principles ADP 2022-23

Foreign Assisted Portfolio FY 2022-23

| | | | | | | | |
|---|-------------------------|--------------------------------------|--|---|--|---|---|
| JICA Japan International Cooperation Agency | WORLD BANK GROUP | ADB ASIAN DEVELOPMENT BANK | DANIDA Danish International Development Agency | AFD Agence Française de Développement | IFAD INTERNATIONAL FUND FOR AGRICULTURAL DEVELOPMENT | AIIB ASIAN INFRASTRUCTURE INVESTMENT BANK | Foreign, Commonwealth & Development Office |
| USD 2.603 Million | USD 243.363 Million | USD 258 Million | USD 4.59 Million | USD 15.81 Million | USD 1.83 Million | USD 4 Million | USD 15 Million |

MAJOR INITIATIVES FOR 2022-23

| | | |
|---|---|--|
| RS. 31.5 BILLION Sustainable Development Program for South Punjab | RS. 127.34 BILLION Universal Health Insurance Program | RS. 58.5 BILLION Sustainable Development Program |
| RS. 10 BILLION Road Rehabilitation Program | RS. 6.0 BILLION Correctional Facilities Revamping Program | RS. 1.643 BILLION Rehabilitation of dual carriageway Kasur Depalpur (98.95 km) |
| RS. 3.65 BILLION Punjab Resilient and Inclusive Agriculture Transformation | RS. 1 BILLION Establishment of Nursing University at PKLI | RS. 1 BILLION Provision of Classrooms / Furniture to Graduate Colleges |
| RS. 2.75 BILLION Chaubara Branch Canal Construction Project - Greater Thal Canal (Phase-II) | RS. 4 BILLION Priority Program | |
| RS. 4.840 Billion Afternoon Schools Program | | |

SMART MONITORING OF DEVELOPMENT PROJECT STEP TOWARDS DIGITAL PUNJAB

